

# 事实 2012 CHINA TRIP [DATES TO REMEMBER]

CHAPEL HILL-CARRBORO CHAMBER OF COMMERCE  IT'S SMART BUSINESS.

## **Time of Registration – Deposit Deadline**

A non-refundable deposit of \$200 per person is required at the time of registration. Full payment is due by Dec. 26, 2011. Registration forms are available at the Chapel Hill-Carrboro Chamber of Commerce office, located at 104 S. Estes Drive, Chapel Hill, or online at [www.CarolinaChamber.org/China](http://www.CarolinaChamber.org/China).

## **Monday, Dec. 26, 2011 – Registration Deadline**

Final, complete registration information and full payment are due to the Chamber by Monday, Dec. 26.

## **Friday, Dec. 30, 2011 – Cancellation Deadline**

Air China International imposes a \$500 cancellation fee after tickets are purchased (Jan. 1, 2012), if you should need to cancel your trip for any reason. The Chamber asks that you alert staff to your cancellation no later than Friday, Dec. 30, 2011 if you wish to avoid cancellation fees.

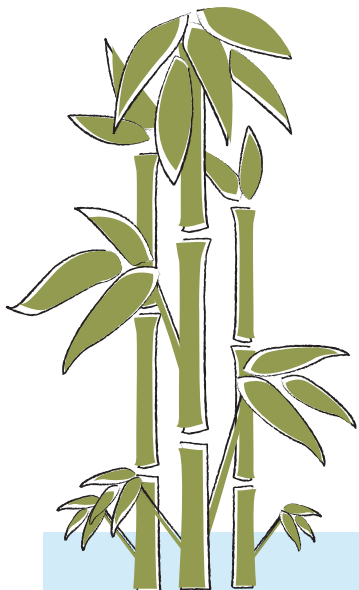
## **Sunday, Jan. 1, 2012 – Ticketing**

Air China International will issue our plane tickets January 1.

## **Monday, Jan. 9, 2012 – Visa Application Deadline**

Passport and Chinese travel visa are required. Securing or updating a passport is the traveler's responsibility. The materials below are due to the Chamber office no later than Monday, Jan. 9 if you wish for the Chamber to handle your visa application.

- Valid Passport (with at least six months of remaining validity and at least one blank visa page)
- Signed and completed visa application form
- Two 2" x 2" black and white or color passport photos
- A check (made out to the Chapel Hill-Carrboro Chamber of Commerce) for \$175



## **Monday, March 26, 2012 – Departure**

Travel to JFK on your own. Board an afternoon flight at JFK by 3:30 p.m. to Beijing (Air China International Flight 982).

## **Tuesday, April 3, 2012 – Return**

Take a morning flight from Shanghai to Beijing, then an afternoon flight to JFK (Air China International Flight 981), where we will arrive at 1:30 p.m. on the same day (April 3). Travel from JFK on your own.

**QUESTIONS?** Contact Meg Branson • 919.357.9977 • [mbranson@carolinachamber.org](mailto:mbranson@carolinachamber.org) • [CarolinaChamber.org/China](http://CarolinaChamber.org/China)